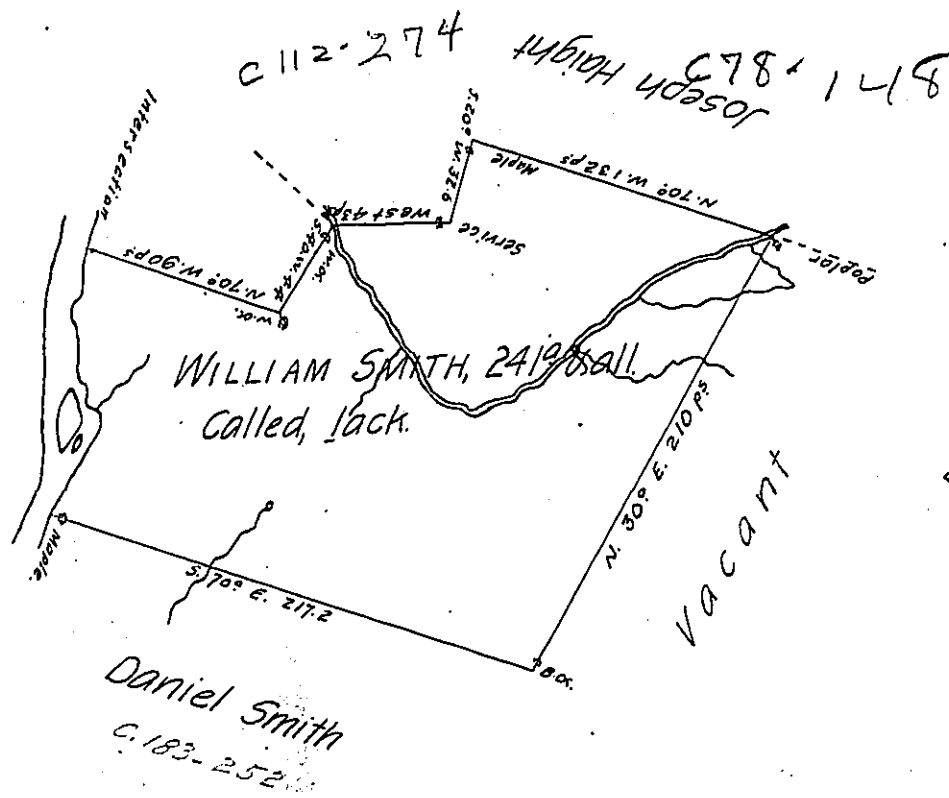


C 204-7



The Courses Down the River
 are as followeth, Beginning at
 the Edge of the Bank thence.

- S. 8° W. 44
- S. 15° E. 24
- S. 37° E. 10.5
- S. 29° W. 50 perches to a Maple
 on the Bank
 128 1/2 p.

Situated, on the Easterly Side of the North fork of Turkey Foot, - Opposite the Island
 above the Bearer Dam, and below the Mouth of Lost Run in Turkey Foot Township, Bed-
 ford County, and Surveyed the 2^d day of February 1775. In pursuance of a Warrant dat-
 ed the 9th day of August 1774.

pr. M^c Lane, Dep^t —

To John Lukens, Esq^r. S. G.

IN TESTIMONY that the above is a copy of the original remaining on file in
 the Department of Internal Affairs of Pennsylvania, made
 conformably to an Act of Assembly approved the 16th day of
 February, 1833, I have hereunto set my Hand and caused
 the Seal of said Department to be affixed at Harrisburg,
 this ninth day of November 1906.

Isaac L. Brown
 Secretary of Internal Affairs.